

# CI U.S. Stock Selection Private Pool

Series A CAD



AS AT DECEMBER 31, 2025

## FUND OVERVIEW

The pool's investment objective is to provide long-term capital growth by investing primarily in large-cap U.S. equity and equity-related securities. Any change to the fundamental investment objective must be approved by a majority of votes cast at a meeting of securityholders held for that reason.

## FUND DETAILS

Inception date	August 2025
CAD Total net assets (\$CAD) As at 2025-12-31	\$809.5 thousand
NAVPS	\$10.6635
MER (%) As at 2025-09-30	2.03
Management fee (%)	1.65
Asset class	U.S. Equity
Currency	CAD
Minimum investment	\$5,000 initial/\$25 additional

### Risk rating<sup>1</sup>



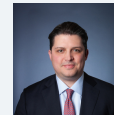
## FUND CODES

A	2034
F	4034
I	5034

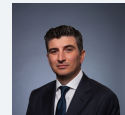
## PERFORMANCE<sup>2</sup>

\*Fund performance is not available for funds with a history of less than one year.

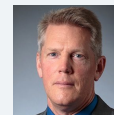
## MANAGEMENT TEAM



Greg Quickmire



Jeremy Rosa



Peter Hofstra

# CI U.S. Stock Selection Private Pool

Series A CAD



AS AT DECEMBER 31, 2025

## PORTFOLIO ALLOCATIONS<sup>3</sup>

Asset allocation	(%)	Sector allocation	(%)	Geographic allocation	(%)
US Equity	88.01	Technology	51.72	United States	67.18
International Equity	7.41	Healthcare	27.86	Canada	25.38
Canadian Equity	2.63	Financial Services	8.61	United Kingdom	2.57
Cash and Equivalents	1.92	Consumer Services	8.37	Taiwan	2.01
Other	0.03	Cash and Cash Equivalent	1.92	Cayman Islands	1.56
		Energy	1.49	Netherlands	1.27
		Other	0.03	Other	0.03

## TOP HOLDINGS<sup>4</sup>

	Sector	(%)
1. CASH	Cash and Cash Equivalent	20.09%
2. NVIDIA Corp	Computer Electronics	9.36%
3. Microsoft Corp	Information Technology	8.45%
4. Alphabet Inc Cl C	Information Technology	7.08%
5. Amazon.com Inc	Retail	5.71%
6. Eli Lilly and Co	Drugs	4.37%
7. Meta Platforms Inc Cl A	Information Technology	4.25%
8. Broadcom Inc	Computer Electronics	4.23%
9. Thermo Fisher Scientific Inc	Healthcare Equipment	3.83%
10. AbbVie Inc	Drugs	3.56%
11. Intuitive Surgical Inc	Healthcare Equipment	3.36%
12. Mastercard Inc Cl A	Diversified Financial Services	3.29%
13. Apple Inc	Computer Electronics	3.18%
14. DexCom Inc	Healthcare Equipment	2.90%
15. Vertex Pharmaceuticals Inc	Drugs	2.61%

Note: This page is not complete without disclaimers on the next page.

**Over 35,000 financial advisors have chosen CI Global Asset Management as a partner. We believe that Canadians have the best opportunity for investments success by using the services of a professional financial advisor. [Learn more at ci.com.](#)**

<sup>1</sup> The risk level of a fund has been determined in accordance with a standardized risk classification methodology in National Instrument 81-102, that is based on the fund's historical volatility as measured by the 10-year standard deviation of the fund's returns. Where a fund has offered securities to the public for less than 10 years, the standardized methodology requires that the standard deviation of a reference mutual fund or index that reasonably approximates the fund's standard deviation be used to determine the fund's risk rating. Please note that historical performance may not be indicative of future returns and a fund's historical volatility may not be indicative of future volatility.

<sup>2</sup> Commissions, trailing commissions, management fees and expenses all may be associated with mutual fund investments. Please read the prospectus before investing. The indicated rates of return are the historical annual compounded total returns net of fees and expenses payable by the fund (except for figures of one year or less, which are simple total returns) including changes in security value and reinvestment of all dividends/distributions and do not take into account sales, redemption, distribution or optional charges or income taxes payable by any securityholder that would have reduced returns. Mutual funds are not guaranteed, their values change frequently, and past performance may not be repeated.

<sup>4</sup> The portfolio holdings are subject to change without notice and may only represent a small percentage of portfolio holdings. They are not recommendations to buy or sell any particular security.

The contents are not to be used or construed as investment advice or as an endorsement or recommendation of any entity of security discussed.

Certain statements contained in this communication are based in whole or in part on information provided by third parties and CI has taken reasonable steps to ensure their accuracy.

The rates of return are used only to illustrate the effects of the compound growth rate and are not intended to reflect future values or returns on investment in an investment fund.

The "Growth of \$10,000 invested" chart shows the final value of a hypothetical \$10,000 investment in securities in this class/series of the fund as at the end of the investment period indicated and is not intended to reflect future values or returns on investment in such securities.

Management Expense Ratio ("MER") represents the trailing 12-month management expense ratio, which reflects the cost of running the fund, inclusive of applicable taxes including HST, GST and QST (excluding commissions and other portfolio transaction costs) as a percentage of daily average net asset value the period, including the fund's proportionate share of any underlying fund(s) expenses, if applicable. The MER is reported in each fund's Management Report of Fund Performance ("MRFP"). MRFPs can be found within the Documents tab on ci.com.

CI Global Asset Management is a registered business name of CI Investments Inc.

©CI Investments Inc. 2025. All rights reserved.

Published January 2026